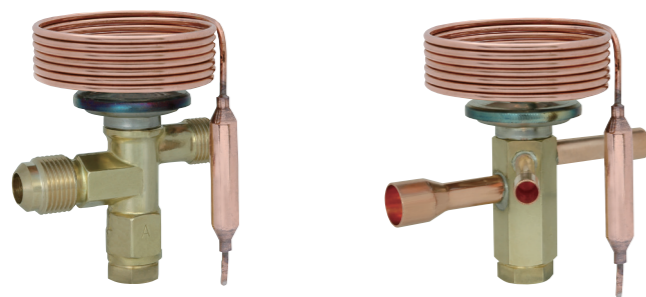


## THERMOSTATIC EXPANSION VALVES / Type QCX & RCX



Type QCX-B

Type RCX-D

Thermostatic Expansion Valve Selection Software⇒



URL : <https://www.saginomiya.co.jp/en/auto/utilitysoft.html>

Capacity Table⇒



URL : [http://saginomiya.co.jp/en/auto/pdf/qcx\\_capacity.pdf](http://saginomiya.co.jp/en/auto/pdf/qcx_capacity.pdf)

### FEATURES

- Wide temperature range. Applicable for deep freezing, refrigeration and air conditioning systems (single flow).
- Equipped with a strainer for flare type
- Suitable for refrigeration systems with hot gas defrosting
- Compatible with low GWP refrigerants (R448A, R449A)
- Standards : UL/cUL (Please contact us for details such as approved specifications.)

### COMMON SPECIFICATIONS

- Type QCX : Internal equalizer type
- Type RCX : External equalizer type
- Max. working pressure : 3.0 MPa
- Max. body and sensing bulb temperature : 80°C
- Adjustable range of static superheat :  
1 to 7°C (R134a, R404A, R448A, R449A)  
1 to 5°C (R407C, R410A)  
○ Increase about 0.045 MPa / rotation
- Flare connection / Solder connection

Charge	Evaporating Temp. (°C)	MOP (°C)	Temp. Condition
C	R134a	-30 to 10	—
SA	R404A	-40 to 10	Ts ≥ Tb
C		-40 to 0	—
SL	R407C	-60 to -25	Ts ≥ Tb
SA		-40 to 10	Ts ≥ Tb
C	R410A	-40 to 0	—
SA		-45 to 10	Ts ≥ Tb
C	R448A	-40 to -10	—
SL		-60 to -30	Ts ≥ Tb
SA	R449A	-40 to 10	Ts ≥ Tb
C		-40 to 0	—
SL	-60 to -25	-20	Ts ≥ Tb

Ts : Power Element Temp. , Tb : Sensing Bulb Temp.

### APPLICATIONS

- Display cases
- Commercial refrigerators
- Cold chain boxes
- Air conditioning systems, Protected horticulture equipments, etc.

### DESCRIPTION OF CATALOG NUMBER

QCX - 03 3 4 B V SA  
I II III IV V VI VII

I	Type
II	Capacity
III	Inlet pipe size
IV	Outlet pipe size
V	Connection
VI	Refrigerant
VII	Charge type

## TYPE NUMBER SELECTION

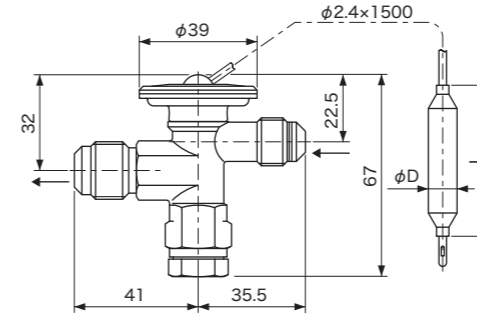
Catalog No.				Equalizer Type	Capacity (U.S.R.T.) {kW}		Connection			Factory superheat setting (°C)	Wt. (kg)
Type	Model	Refrigerant	Charge Type		Charge : SA, C	Charge : SL	Inlet	Outlet	Equalizer		
					CT 38°C ET -5°C	CT 38°C ET -30°C					
QCX RCX	0234B [D]	M (R134a)	C	Internal (QCX) External (RCX)	0.24 {0.85}	—	3/8" Flare [3/8" (OD)] Solder	1/2" Flare [1/2" (OD)] Solder	1/4" Flare [1/4" (OD)] Solder	5	0.28 (QCX-B) 0.24 (QCX-D) 0.29 (RCX-B) 0.24 (RCX-D)
	0434B [D]				0.36 {1.28}	—					
	0634B [D]				0.61 {2.13}	—					
	1034B [D]				0.96 {3.38}	—					
	1234B [D]				1.21 {4.27}	—					
	1834B [D]				1.82 {6.40}	—					
	2434B [D]				2.43 {8.54}	—					
	3634B [D]				3.64 {12.8}	—					
	0234B [D]	U (R404A)	SA C SL		0.20 {0.70}	0.13 {0.46}					
	0334B [D]				0.30 {1.05}	0.19 {0.68}					
	0534B [D]				0.49 {1.74}	0.32 {1.11}					
	0834B [D]				0.78 {2.76}	0.51 {1.79}					
	1034B [D]				0.99 {3.48}	0.64 {2.25}					
	1534B [D]				1.48 {5.22}	0.98 {3.44}					
2034B [D]	H (R407C)	SA C	1.98 {6.95}	1.32 {4.63}							
3034B [D]			2.96 {10.4}	1.80 {6.34}							
0334B [D]			0.32 {1.13}	—							
0534B [D]			0.48 {1.70}	—							
0834B [D]			0.81 {2.84}	—							
1234B [D]			1.29 {4.54}	—							
1634B [D]			1.61 {5.67}	—							
2434B [D]			2.42 {8.51}	—							
3134B [D]	3.21 {11.3}	—									
4734B [D]	4.83 {17.0}	—									

TYPE NUMBER SELECTION

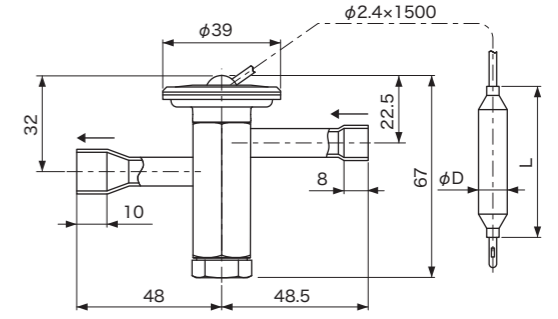
Catalog No.				Equalizer Type	Capacity (U.S.R.T.) {kW}		Connection			Factory superheat setting (°C)	Wt. (kg)
Type	Model	Refrigerant	Charge Type		Charge : SA, C	Charge : SL	Inlet	Outlet	Equalizer		
					CT 38°C ET -5°C	CT 38°C ET -30°C					
QCX RCX	0334B [D]	V (R410A)	SA C SL	Internal (QCX) External (RCX)	0.35 {1.22}	0.20 {0.71}	3/8" Flare [3/8" (OD) Solder]	1/2" Flare [1/2" (OD) Solder]	1/4" Flare [1/4" (OD) Solder]	5	0.28 (QCX-B) 0.24 (QCX-D) 0.29 (RCX-B) 0.24 (RCX-D)
	0534B [D]				0.52 {1.83}	0.30 {1.05}					
	0934B [D]				0.86 {3.04}	0.49 {1.71}					
	1434B [D]				1.37 {4.82}	0.79 {2.77}					
	1734B [D]				1.73 {6.08}	0.99 {3.50}					
	2634B [D]				2.59 {9.12}	1.51 {5.33}					
	3534B [D]				3.44 {12.1}	2.04 {7.17}					
	5234B [D]				5.18 {18.2}	2.79 {9.81}					
	0334B [D]	C1 (R448A)	SA C SL		0.29 {1.03}	0.20 {0.70}					
	0434B [D]				0.44 {1.55}	0.29 {1.03}					
	0734B [D]				0.74 {2.59}	0.48 {1.70}					
	1234B [D]				1.18 {4.14}	0.78 {2.73}					
	1534B [D]				1.47 {5.17}	0.98 {3.44}					
	2234B [D]				2.21 {7.76}	1.49 {5.25}					
	2934B [D]				2.93 {10.3}	2.01 {7.08}					
	4334B [D]				4.41 {15.5}	2.75 {9.68}					
	0334B [D]	C1 (R449A)	SA C SL		0.28 {0.99}	0.20 {0.69}					
	0434B [D]				0.42 {1.49}	0.29 {1.01}					
	0734B [D]				0.71 {2.48}	0.47 {1.67}					
	1234B [D]				1.13 {3.97}	0.76 {2.68}					
	1534B [D]				1.41 {4.96}	0.96 {3.38}					
	2234B [D]				2.12 {7.44}	1.47 {5.17}					
	2934B [D]				2.82 {9.93}	1.98 {6.97}					
	4334B [D]				4.24 {14.9}	2.71 {9.53}					

• For other refrigerant, please contact SAGINOMIYA.

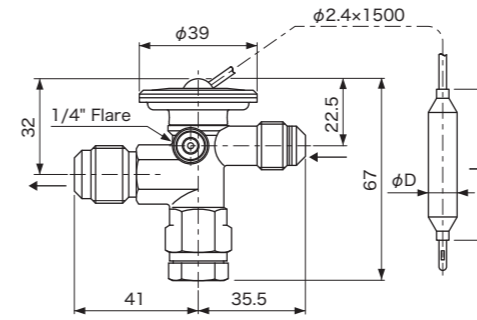
DIMENSIONS



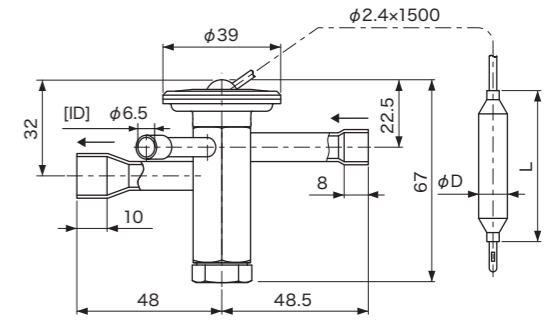
Type QCX-B



Type QCX-D



Type RCX-B



Type RCX-D

Unit : mm

Charge	Unit : mm	
	D	L
SA	12.7	80
C	9.5	50
SL	12.7	80

ACCESSORY

- Sensing Bulb Mounting Band

