

DIAPHRAGM TYPE STOP VALVES

Type ADV

SAGINOMIYA

GENERAL DESCRIPTION

- The valve can be used on the lines of delivery gas, liquid, suction gas and hot gas, etc.
- The valve is applicable to not only Fluorinated refrigerants, but also air.
- In spite of its compactness and light weight, the port diameter is comparatively large to enable to flow a large amount.
- The large diameter handle makes easy and smooth rotation even in vacuum condition.
- Carefully processed valve with selected material provides long trouble free service and dependable operation.
- Type ADV cannot be used in a reverse flow.



Type ADV-B



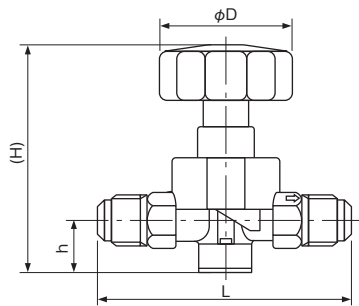
Type ADV-D

TYPE NUMBER SELECTION (SPECIFICATIONS)

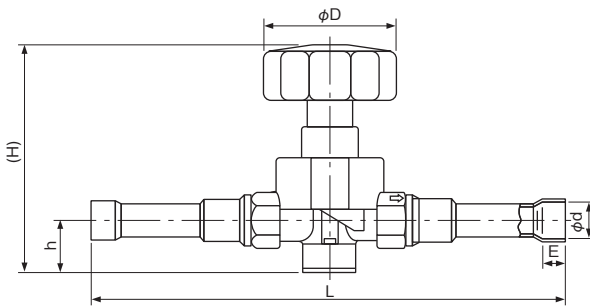
Unit: MPa {kgf/cm²}

Catalog No.	Port Size (mm)	Cv Value	Connection		Max. Working Pressure	Fluid Temp. (°C)	Wt. (kg)	
			Copper Tube (O.D.)	Style				
ADV-	902BY	9	0.35	1/4"	3.6 {36}	-40 to 120	0.26	
	903BY		0.79	3/8"				0.32
	1404BY	14	1.61	1/2"			0.51	
	1605BY		16	2.82				5/8"
	1606BY	3.46		3/4"			1.13	
	902DY	9	0.35	1/4" (6.35)				0.24
	903DY		0.79	3/8" (9.53)			0.28	
	1404DY	14	1.61	1/2" (12.7)				
	1605DY		16	2.82			5/8" (15.88)	
	1606DY	16		3.46			3/4" (19.05)	
1607DY	7/8" (22.23)							

DIMENSIONS



Type ADV-BY



Type ADV-DY

Unit: mm

Catalog No.	Unit: mm						
	L	H	h	φD	φd	E	
ADV-	902BY	80	75	20	52	-	
	903BY	85	75.5	19.5			
	1404BY	101	87.5				
	1605BY	128	98	23	70	-	
	1606BY	135	102	25			
	902DY	165	75	20	52	6.5	8
	903DY		75.5	19.5		9.65	
	1404DY		190			87.5	
	1605DY	200	98	23	70	16.15	14
	1606DY		102	25		19.3	
1607DY	22.45						