

OIL PROTECTION CONTROLS

Type ONS

SAGINOMIYA

GENERAL DESCRIPTION

- Provides dependable protection against major breakdown on pressure lubricated refrigeration compressors by guarding against low lubrication oil pressure.
- With manual reset.
- Built in time delay switch.
- Mounting bracket is supplied as standard.
- Stainless steel models are available upon request.

CE mark applicable (available upon request)

SPECIFICATIONS

- Fluid temperature: -20 to 120°C
- Ambient temperature: -20 to 70°C



TYPE NUMBER SELECTION

Unit: MPa {kgf/cm²}

Catalog No.	Range		Differential Fixed	Timer Specification			Connection	Wt. (kg)													
	Min.	Max.		Delay Time(sec.)	Timer Voltage	Timer Circuit															
ONS-C106XQ1	0.05 {0.5}	0.35 {3.5}	Approx. 0.05 { Approx. 0.5 }	45	100/200V. AC	Standard (SPST) without Alarm Contact	1/4" Flare Nut	0.55													
ONS-C106XQ2				90																	
ONS-C106XQ3				110																	
ONS-C106XQ4				45	110/220V. AC				Standard (SPST) without Alarm Contact	1000mm Capil. Tube with 1/4" Flare Nut	0.62										
ONS-C106XQ5				90																	
ONS-C106XQ6				110																	
ONS-C106XQ7				45	115/230V. AC							Standard (SPST) without Alarm Contact	1000mm Capil. Tube with 1/4" Flare Nut	0.62							
ONS-C106XQ8				90																	
ONS-C106XQ9				110																	
ONS-C106XQ10				45	120/240V. AC										Standard (SPST) without Alarm Contact	1000mm Capil. Tube with 1/4" Flare Nut	0.62				
ONS-C106XQ11				90																	
ONS-C106XQ12				110																	
ONS-C106XL1Q1				45	100/200V. AC		Standard (SPST) without Alarm Contact	1000mm Capil. Tube with 1/4" Flare Nut										0.62			
ONS-C106XL1Q2				90																	
ONS-C106XL1Q3				110																	
ONS-C106XL1Q4				45	110/220V. AC				Standard (SPST) without Alarm Contact	1000mm Capil. Tube with 1/4" Flare Nut	0.62										
ONS-C106XL1Q5				90																	
ONS-C106XL1Q6				110																	
ONS-C106XL1Q7				45	115/230V. AC							Standard (SPST) without Alarm Contact	1000mm Capil. Tube with 1/4" Flare Nut	0.62							
ONS-C106XL1Q8				90																	
ONS-C106XL1Q9				110																	
ONS-C106XL1Q10				45	120/240V. AC										Standard (SPST) without Alarm Contact	1000mm Capil. Tube with 1/4" Flare Nut	0.62				
ONS-C106XL1Q11				90																	
ONS-C106XL1Q12				110																	
ONS-C106XQ25				0.05 {0.5}	0.35 {3.5}		Approx. 0.05 { Approx. 0.5 }	45										100/200V. AC	With Alarm Contact (SPDT)	1/4" Flare Nut	0.55
ONS-C106XQ26								90													
ONS-C106XQ27								110													
ONS-C106XQ28								45	110/220V. AC	With Alarm Contact (SPDT)	1000mm Capil. Tube with 1/4" Flare Nut							0.62			
ONS-C106XQ29								90													
ONS-C106XQ30								110													
ONS-C106XQ31								45	115/230V. AC			With Alarm Contact (SPDT)	1000mm Capil. Tube with 1/4" Flare Nut	0.62							
ONS-C106XQ32								90													
ONS-C106XQ33								110													
ONS-C106XQ34								45	120/240V. AC						With Alarm Contact (SPDT)	1000mm Capil. Tube with 1/4" Flare Nut	0.62				
ONS-C106XQ35								90													
ONS-C106XQ36								110													
ONS-C106XL1Q25	45	100/200V. AC	With Alarm Contact (SPDT)			1000mm Capil. Tube with 1/4" Flare Nut		0.62													
ONS-C106XL1Q26	90																				
ONS-C106XL1Q27	110																				
ONS-C106XL1Q28	45	110/220V. AC							With Alarm Contact (SPDT)	1000mm Capil. Tube with 1/4" Flare Nut	0.62										
ONS-C106XL1Q29	90																				
ONS-C106XL1Q30	110																				
ONS-C106XL1Q31	45	115/230V. AC										With Alarm Contact (SPDT)	1000mm Capil. Tube with 1/4" Flare Nut	0.62							
ONS-C106XL1Q32	90																				
ONS-C106XL1Q33	110																				
ONS-C106XL1Q34	45	120/240V. AC													With Alarm Contact (SPDT)	1000mm Capil. Tube with 1/4" Flare Nut	0.62				
ONS-C106XL1Q35	90																				
ONS-C106XL1Q36	110																				

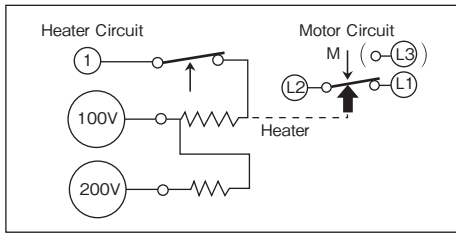
- Max. Working Pressure: 1.5 MPa {15 kgf/cm²}
- Limit of Pressure Diff. $H_p \geq L_p$: 1.5 MPa {15 kgf/cm²}, H_p represents oil pump discharge pressure and L_p crank case pressure.
- Enclosure: IP20
- Drip Proof Models: Available upon request. (Refer to page 52.)

※After the timer operation, please press the reset button later 30 minutes.

ELECTRICAL RATINGS

Rated Current (A)	Rated Voltage (V)	Power Factor (cos φ)	125/250V. AC
Non-Inductive Current		1	3.5
Inductive Current	Full Load	0.75	3
	Inrush Current	—	10

CONTACT FUNCTIONS



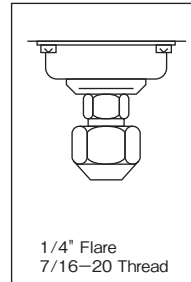
↑ : Operating direction of pressure increase

↑ : Operating direction of timer when energized

M ↓ : Operating direction of manual reset

(L3: Alarm Contact provided with a lead wire approx.)
φ3.5×100mm with a soldered terminal.

PRESSURE CONNECTIONS



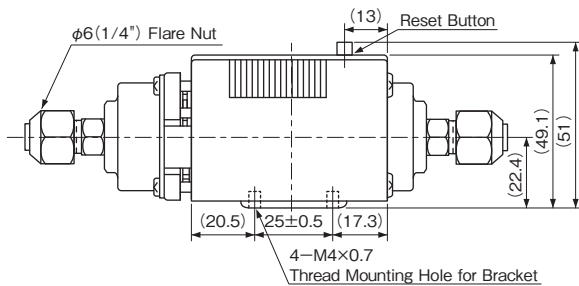
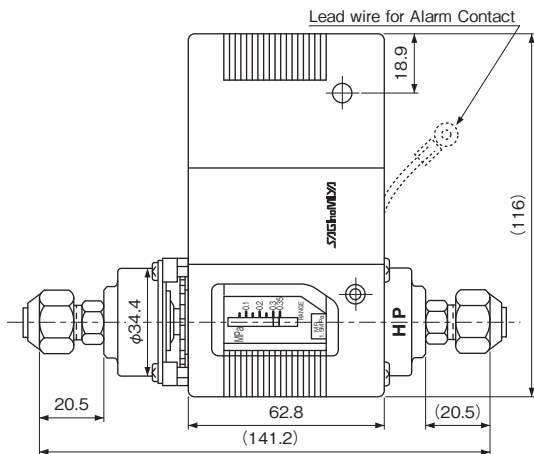
Standard

Refer to page 45, 46.

1	Heater Circuit	Common Terminal
100		100V Power Supply Terminal
200		200V Power Supply Terminal
L1	Motor Circuit	Open on Decrease of Pressure Difference
L2		Main Contact
L3		Alarm Contact

110/220V. AC, 120/240V. AC etc. available

DIMENSIONS



Unit: mm