

DIFFERENTIAL PRESSURE CONTROLS

Type WNS & YNS

SAGHOMIYA

GENERAL DESCRIPTION

Type WNS

- Differential pressure is adjustable controller.
- It is suitable for water cutoff detection of cooling water circuit.

• Standard Type : IP20

Type YNS

- Narrow differential pressure (fixed) controller.

• Standard Type : IP20

CE mark applicable (available upon request)

UL recognized (available upon request)



SPECIFICATIONS

- Fluid temperature: -20 to 120°C
- Ambient temperature: -20 to 70°C
- For water, air and fluorinated refrigerant

TYPE NUMBER SELECTION

Type WNS – Adjustable differential type for water, air and fluorinated refrigerant

Unit: MPa {kgf/cm²}

Catalog No.	Range		Differential		Factory Setting		Max. Working Pressure	Limit of Press. Differential (HP > LP)	Wt. (kg)
	Min.	Max.	Min.	Max.	Off	On			
WNS-C102X	0.03 {0.3}	0.2 {2}	0.03 {0.3}	0.15 {1.5}	0.05 {0.5}	0.02 {0.2}	0.5 {5}	0.5 {5}	0.43
WNS-C106X	0.05 {0.5}	0.35 {3.5}	0.05 {0.5}	0.25 {2.5}	0.1 {1.0}	0.05 {0.5}	1.5 {15}	1.5 {15}	

Type YNS – Fixed narrow differential

Unit: MPa {kgf/cm²}

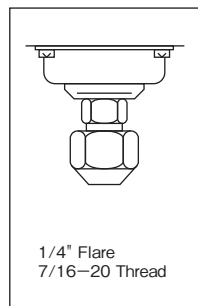
Catalog No.	Range		Differential	Factory Setting		Max. Working Pressure	Limit of Press. Differential (HP > LP)	Wt. (kg)
	Min.	Max.	Fixed	Off	On			
YNS-C102X	0.02 {0.2}	0.2 {2}	0.015 {0.15} approx.	0.05 {0.5}	(0.035) {(0.35)}	0.5 {5}	0.5 {5}	0.43
YNS-C106X	0.025 {0.25}	0.35 {3.5}	0.025 {0.25} approx.	0.15 {1.5}	(0.125) {(1.25)}	1.5 {15}	1.5 {15}	

- HP.....High Side Press. LP.....Low Side Press.
- Enclosure: IP20
- Drip proof models: Available upon request. (Refer to page 52.)
- Please contact us if other range models are required.

ELECTRICAL RATINGS

Rated Current (A)	Rated Voltage (V)	Power Factor (cos φ)	125/250V. AC
Non-Inductive Current		1	12
Inductive Current	Full Load	0.75	
	Inrush Current		—

PRESSURE CONNECTIONS

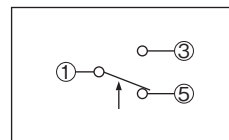


Standard

Refer to page 45, 46.

Catalog No.	Unit: mm			
	φ A	B	C	D
WNS-C102X	38.5	50.0	39.0	147.2
WNS-C106X	34.4	47.0	36.0	141.2

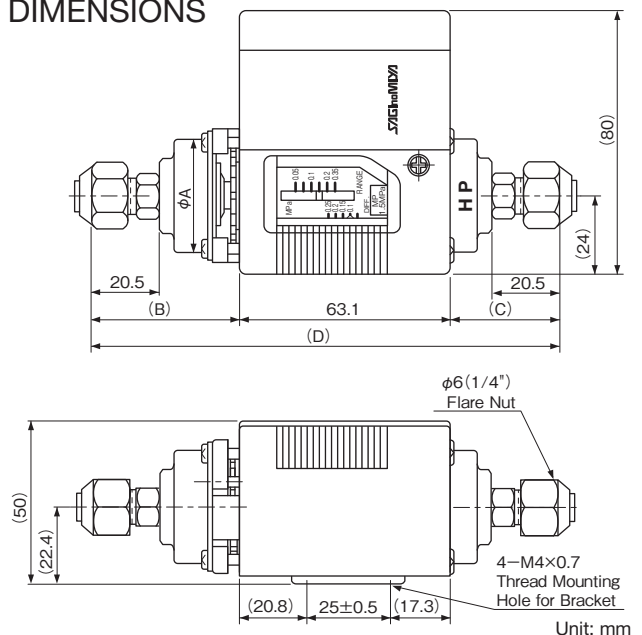
CONTACT FUNCTIONS



1	Common Terminal
3	Close on Pressure Increase
5	Close on Pressure Decrease

↑ : Operating direction on press. increase at High Press. Side

DIMENSIONS



Unit: mm