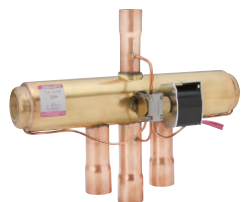


3-WAY SOLENOID VALVES / Type STF-C



Type STF-C

High Volume OEM Item

Drawings must be exchanged for purchase. Please contact SAGINOMIYA for more details.

Coil sold separately

FEATURE

- 3-way valve with high flow rate.

APPLICATIONS

- Cooling units
- Packaged air conditioners
- VRF
- Chillers, etc.

COMMON SPECIFICATION

- Max. working pressure : 4.2 MPa
- Maximum Operating Pressure Differential : 3.1 MPa
- Minimum Operating Pressure Differential : 0.3 MPa
- Fluid Temperature : -20 ~ 120°C
- Ambient temperature : -20 ~ 55°C

DESCRIPTION OF CATALOG NO.

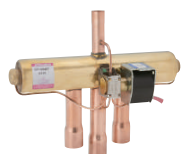
STF-C - 04 07
I II III

I	Type
II	Capacity
III	Serial number

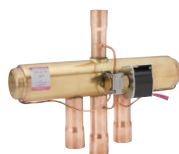
TYPE NUMBER SELECTION

Catalog No.		* 1	Port Size (mm)	Style	Connection		* 2	Remarks
Type	Model	Refrigerant			Connection size			
					High-pressure side	Low-pressure side		
STF-C	0407	R407C R410A R448A	15.5	Copper tube solder (ODF)	1/2"	3/4"	0.8	Dedicated to high-pressure gas lines in refrigeration circuits
	0708	R449A R407H			3/4"	7/8"		

* 1 For other refrigerants, please contact us.
* 2 Valve only (without coil)



Type STF-C0407



Type STF-C0708

COIL SELECTION

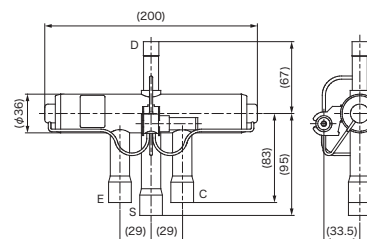
Coil Catalog No.		Rated Voltage	Frequency (Hz)	Tolerance (%)	Voltampere (VA)		Power consumption (W)	Insulation Class	* 2 Wt. (kg)
Type	Model				Running	Inrush			
STF	(G)□□□□	100V.AC	50/60	+ 10 - 15	13/10	39/30	7/6	Class B Molded * 1	0.13
		200V.AC							
		110V.AC							
		220V.AC							
		230V.AC							
240V.AC	± 10	11/9	33/27	6/6					

* 1 Compliant with IEC60085, 60335-2-40.

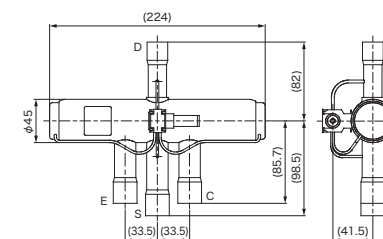
* 2 For lead wire length of 600mm.

- Use the STF-G type 4-way reversing valve coil.
- Coil is not included. Please specify coil voltage when ordering the valve body.
- Current (A) = Voltampere / Rated Voltage

DIMENSIONS



Type STF-C0407



Type STF-C0708

Unit : mm

Flow direction (flow path)

Flow	Power ON	Power OFF
	D → E	D → C