

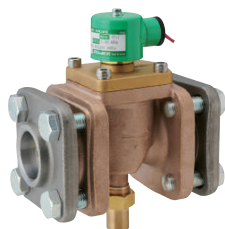
### SOLENOID VALVES FOR REFRIGERANT / Type REV



Type REV-B



Type REV-D



Type REV-EX



Type REV-G

Click or scan here for the capacity table. ⇒



URL : [https://saginomiya.co.jp/en/auto/pdf/en\\_rev\\_capacity.pdf](https://saginomiya.co.jp/en/auto/pdf/en_rev_capacity.pdf)

#### FEATURES

- Solenoid valves for fluorocarbon refrigerants. Also available for air.
- Various connection styles are available.
- Manual opening mechanism (Manual opening stem) is also available.
- It can also be installed on vertical piping, simplifying the piping design.
- Drip-proof types are also available.
- Standards : CE, UKCA (Please contact us for details such as approved specifications.)

#### COMMON SPECIFICATIONS

- Fluid Temperature : -40 ~ 125°C
- Ambient temperature : -30 ~ 40°C
- Normally Closed

#### APPLICATIONS

- Condensing units
- Chillers
- Air conditioning systems, etc.

#### DESCRIPTION OF CATALOG NO.

REV - 15 06 B X F \* A 4 C  
I II III IV V VI VII VIII IX

I	Type
II	Port Size
III	Connection tube O.D.
IV	Connection type
V	Pressure class
VI	Fluid
VII	Coil power supply
VIII	Coil voltage
IX	Coil Style

#### TYPE NUMBER SELECTION

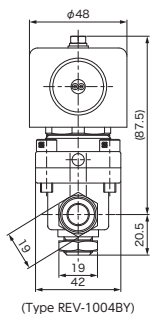
Catalog No.					Port Size (mm)	Cv Value	Connection		O.P.D. (MPa)		Max. working pressure (MPa)	Manual Opening Stem	* 5 Wt. (kg)																				
Type	Model	Fluid	Power supply / Voltage	Coil Style			Style	Connection size	Min.	Max.																							
REV	703BY	F (Various refrigerants) * 1			7	1.0	Flare	3/8"	0.007	2.45	4.2	-	0.4																				
	1004BY				10	2.0		1/2"					0.7																				
	1205BY				12	3.5		5/8"					0.9																				
	1506BY				15	5.3	3/4"	1.3																									
	1003GY				10	2.0	Rc	3/8"					0.8																				
	1204GY				12	3.5		1/2"					1.1																				
	1506GY				15	5.3		3/4"					1.5																				
	703DY				A (Air)	* A1 (100V.) AC							7	1.0	Copper tube solder (ODF)	3/8"	0.007	2.45	4.2	-	0.3												
	1004DY				10								2.0	1/2"		0.6																	
	1205DY				12								3.5	5/8"		0.7																	
	1506DY	15	5.3	3/4"	0.9																												
	2007DY	* A2 (200V.) AC	20	9.0	1"				1.4																								
	2010DY	* A3 (110V.) AC									1-1/8"	0.007	2.45	2.94	Option * 4	0.4																	
	703BX										7					1.0					3/8"	0.7											
	1004BX										10					2.0					1/2"	0.9											
	1205BX	12	3.5	5/8"	1.3																												
	1506BX	* A4 (220V.) AC	15	5.3	3/4"				0.8																								
	1003GX	* A7 (24V.) AC	C (Lead Wire type)					10	2.0	0.007	2.45					2.94	-	0.8															
	1204GX							12	3.5									1/2"	1.1														
	1506GX							15	5.3									3/4"	1.5														
	703DX							* AB (240V.) AC	W (Drip-proof terminal box type)													7	1.0	0.007	2.45	2.94	Option * 4	0.3					
	1004DX																					10	2.0					1/2"	0.6				
	1205DX											12	3.5	5/8"	0.7																		
	1506DX											15	5.3	3/4"	0.9																		
	2007DX											* D1 (100V.) DC	20	9.0	7/8"							1.4											
	2010DX											* D6 (12V.) DC																1"	0.007	2.45	2.94	Option * 4	1.4
	2011DX																											1-1/8"					1.4
	2511DX	1-1/8"	2.0																														
	2512DX	25	13.8	1-1/4"	2.0																												
	2513DX	* D7 (24V.) DC								1-3/8"	0.007	2.45	2.94	Option * 4	2.0																		
	3213DX							1-3/8"	3.0																								
	3214DX							1-1/2"	3.0																								
	3215DX	32	19.4	1-5/8"	3.0																												
	2006EX	20	9.0	20A	4.9																												
	2510EX	25	13.8	25A	7.5																												
	3212EX	32	19.4	32A	8.7																												
	4014EX	40	32.0	40A	10.6																												
	5020EX	50	45.0	50A	16.1																												
	6524EX	Flange * 3						65A	0.007	2.45					2.94	with	23.0																
	6530EX							80A			26.4																						

- \* 1 R134a, R404A, R407C, R410A, R448A, R449A, R407H, R463A-J (For other refrigerants, please contact us.)
- \* 2 For available refrigerants, please contact us.
- \* 3 Joint flange can be attached as an option.
- \* 4 If required, please add 'M' after the catalog number. (e.g. REV-M703BYF)
- \* 5 Valve only (without coil). The weight of the flange type is included the flange and a set of the tie bolt.

SPECIFICATIONS OF COILS

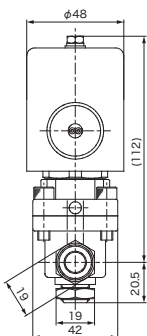
Rated Voltage	Frequency (Hz)	Tolerance (%)	Voltampere (VA)		Power consumption (W)	Insulation Class	Coil Style	Wt. (kg)
			Running	Inrush				
24V.AC	50/60	+10 -15	17/14	43/35	8/7	Class B Molded	Lead Wire type	0.2
Drip-proof terminal box type							0.5	
100V.AC							Lead Wire type	0.2
Drip-proof terminal box type							0.5	
110V.AC							Lead Wire type	0.2
Drip-proof terminal box type							0.5	
200V.AC							Lead Wire type	0.2
Drip-proof terminal box type							0.5	
220V.AC	—	±10	—	—	10	Class B Molded	Lead Wire type	0.2
240V.AC							Drip-proof terminal box type	0.5
12V.DC							Lead Wire type	0.3
Drip-proof terminal box type							0.6	
24V.DC	—	±10	—	—	10	Class B Molded	Lead Wire type	0.3
Drip-proof terminal box type							0.6	
100V.DC	—	±10	—	—	10	Class B Molded	Lead Wire type	0.3
Drip-proof terminal box type							0.6	

- Current (A) = Voltampere / Rated Voltage
- IP Lead Wire type : IP67, Drip-proof terminal box type : IP34
- The standard specification of the coil style is the Lead wire type.
- Drip-proof terminal box type can be used indoors where water drops may fall.



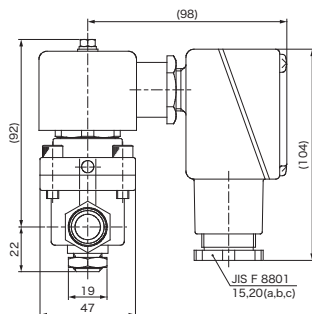
(Type REV-1004BY)

Lead Wire type  
(AC Coil, IP67)



(Type REV-1004BY)

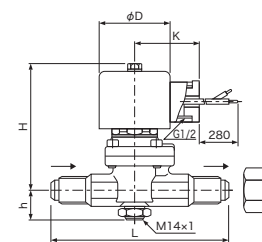
Lead Wire type  
(DC Coil, IP67)



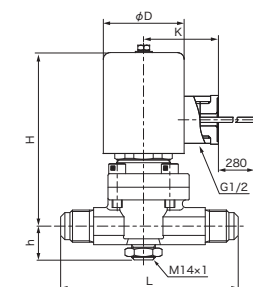
(Type REV-1205BY) Unit : mm

Drip-proof terminal box type  
(IP34)

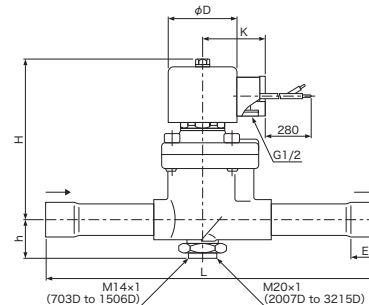
DIMENSIONS



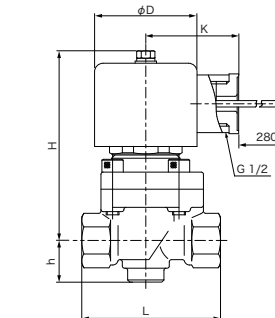
Type REV-B (AC Coil)



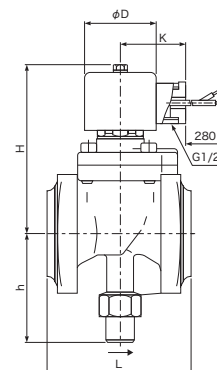
Type REV-B (DC Coil)



Type REV-D (AC Coil)



Type REV-G (AC Coil)



Type REV-EX (AC Coil)

Catalog No.		Unit : mm							
Type	Model	L	H*		h	E	phi D	K	
			AC	DC					
REV	703B	90	73	95	19	—	48	44	
	1004B	105	90	112	21				
	1205B	115	92	114	22				
	1506B	135	99	121	25				
	1003G	65	91	113	20				
	1204G	75	96	118	21				
	1506G	85	102	124	24				
	703D	150	73	95	19				10
	1004D	160	90	112	21				13
	1205D	180	92	114	22				16
	1506D	190	99	121	25	19			
	2007D	230	116	138	29	20	—	—	
	2010D								
	2011D								
	2006EX	95	112	134	76	—	—	—	
	2510EX	110	123	145	78				
	3212EX	120	126	148	87				
4014EX	130	133	155	92					
5020EX	170	149	171	115					
6524EX	200	169	191	129	—	—	—		
6530EX	210	169	191	129					

\* AC" refers assembled with AC power supply coil and "DC" refers assembled with DC power supply coil.

OPTIONAL PARTS

● JOINT FLANGE

• The lower limit of operating temperature for flanges is -10°C. In case operating temperature would be below the lower limit, please contact us.

When ordering the joint flange separately, please specify the "Joint Flange Catalog Number" from the compatibility table below.

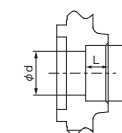
Valve Body Catalog No.		Joint flange type									* 1								
Type	Model	Connection		Flange type (square flange)	Pipe type	Outer diameter of connection pipe [mm]	Flange inner diameter φ d [mm]	Insert hole			Joint flange Catalog No.								
		Style	Connection size					Screw thread	Inner diameter φ d0 [mm]	Depth L [mm]									
REV	2006EX	20A	06D	Socket brazing type type RBK	Copper pipe	19.05	17.1	—	19.4	12	REV-06E06D								
						22.22	19.8		22.4		REV-06E07D								
						25.40	22.6		25.6		REV-06E10D								
						28.58	25.8		28.8		REV-06E11D								
						31.75	28.6		32.0		REV-06E12D								
						27.20	21.4		27.6		REV-06E06K								
		06K	Steel pipe	Slip-on welding type type RSK	27.20	27.6	27.6	—	REV-06E06S										
					06G	Screwed type	Steel pipe	—	—	Rc 3/4	—	—	REV-06E06G						
								2510EX	25A	10D	Socket brazing type type RBK	Copper pipe	25.40	22.6	—	25.6	14	REV-10E10D	
													28.58	25.8		28.8		REV-10E11D	
													31.75	28.6		32.0		REV-10E12D	
													34.92	31.4		35.2		REV-10E13D	
	38.10	34.5	38.1	REV-10E14D															
	10K	Steel pipe	34.00	27.2	34.5	—	REV-10E10K												
	10S	Steel pipe	34.00	34.5	34.5	—	REV-10E10S												
	10G	Steel pipe	—	—	Rc 1	—	—	REV-10E10G											
	3212EX	32A	12D	Socket brazing type type RBK	Copper pipe	31.75	28.6	—	32.0	16	REV-12E12D								
						34.92	31.4		35.2		REV-12E13D								
						38.10	34.5		38.3		REV-12E14D								
						41.28	37.3		41.5		REV-12E15D								
						42.70	35.5		43.3		REV-12E12K								
						48.60	41.2		49.3		REV-12E14K								
			12S	Slip-on welding type type RSK	Steel pipe	42.70	43.3	43.4	—	REV-12E12S									
						48.60	49.3	49.3	—	REV-12E14S									
						12G	Screwed type	Steel pipe	—	—	Rc 1-1/4	—	—	REV-12E12G					
									Rc 1-1/2	—	—	REV-12E14G							
									4014EX	40A	14D	Socket brazing type type RBK	Copper pipe	38.10	34.5	—	38.3	16	REV-14E14D
														41.28	37.3		41.5		REV-14E15D
	44.45	40.8	44.7	REV-14E16D															
	50.80	45.8	51.1	REV-14E20D															
	14K	Steel pipe	48.60	41.2	49.3	—	REV-14E14K												
	14S	Steel pipe	48.60	49.3	49.3	—	REV-14E14S												
	14G	Steel pipe	—	—	Rc 1-1/2	—	—	REV-14E14G											

OPTIONAL PARTS

Valve Body Catalog No.		Joint flange type								* 1								
Type	Model	Style	Connection size	Flange type (square flange)	Pipe type	Outer diameter of connection pipe [mm]	Flange inner diameter φ d [mm]	Insert hole			Joint flange Catalog No.							
								Screw thread	Inner diameter φ d0 [mm]	Depth L [mm]								
REV	5020EX	50A	20D	Socket brazing type type RBK	Copper pipe	50.80	45.8	—	51.1	19	REV-20E20D							
						53.98	49.0		54.3		REV-20E21D							
						57.15	51.2		57.5		REV-20E22D							
						63.50	57.5		63.8		REV-20E24D							
						60.50	52.7		61.3		REV-20E20K							
						20K	Steel pipe		60.50		52.7	61.3	—	REV-20E20S				
		20S	Slip-on welding type type RSK	Steel pipe	60.50	61.3	61.3	—	REV-20E20S									
					20G	Screwed type	Steel pipe	—	—	Rc 2	—	—	REV-20E20G					
								6224EX	65A	24D	Socket brazing type type RBK	Copper pipe	63.50	57.5	—	63.8	22	REV-24E24D
													66.68	60.7		67.0		REV-24E25D
													76.20	69.2		76.6		REV-24E30D
										24K	Steel pipe	76.30	65.9	77.2	—	REV-24E24K		
	24S	Steel pipe	76.30	77.2						77.2	—	REV-24E24S						
	24G	Steel pipe	—	—	Rc 2-1/2	—	—			REV-24E24G								
	6530EX	80A	30D	Socket brazing type type RBK	Copper pipe	76.20	69.2	—	76.6	26	REV-30E30D							
						79.38	71.4		79.8		REV-30E31D							
						88.90	80.9		89.3		REV-30E34D							
						89.10	78.1		90.2		REV-30E30K							
			30S	Steel pipe	89.10	90.2	90.2	—	REV-30E30S									
			30G	Screwed type	Steel pipe	—	—	Rc 3	—	—	REV-30E30G							

\* 1 The joint flange is a set of one joint flange on one side, bolts and flange packing (\* 2).  
 \* 2 Only the flange packing can be purchased separately. Please specify the Flange packing Catalog No. from the table below.

Connection size of Joint flange	Flange packing Catalog No.
20A	REV-1N-00003
25A	REV-1N-00004
32A	REV-1N-00005
40A	REV-1N-00006
50A	REV-1N-00007
65A	REV-1N-00008
80A	REV-1N-00009



Example of Joint flange insert hole

STANDARD ACCESSORY

- Flare Nut (only for flare connection model)