

SOLENOID VALVES FOR REFRIGERANT / Type JEV



Type JEV

Click or scan here for the capacity table. =>



URL : https://saginomiya.co.jp/en/auto/pdf/jev_capacity.pdf

FEATURE

- Solenoid valves for fluorocarbon refrigerants. Also available for air.
- It can also be installed on vertical piping.
- Built-in strainer

APPLICATIONS

- Condensing units
- Chillers
- Air conditioning systems, etc.

COMMON SPECIFICATION

- Max. working pressure : 2.94 MPa
- Fluid Temperature : -40 ~ 125°C
- Ambient temperature : -30 ~ 40°C
- Normally Closed

DESCRIPTION OF CATALOG NO.

JEV - $\frac{12}{I}$ $\frac{03}{II}$ $\frac{E}{III}$ $\frac{X}{IV}$ $\frac{F}{V}$ * $\frac{A}{VI}$ $\frac{4}{VII}$ $\frac{C}{IX}$

I	Type
II	Port Size
III	Connection tube O.D.
IV	Connection type
V	Pressure class
VI	Fluid
VII	Coil Power supply
VIII	Coil Voltage
IX	Coil Style

TYPE NUMBER SELECTION

Catalog No.					Port Size (mm)	Cv Value	Connection		O.P.D. (MPa)		Manual Opening Stem	* 3 Wt. (kg)
Type	Model	Fluid	Rated Voltage	Coil Style			Style	Connection size	Min.	Max.		
JEV	1203EX	F (Various refrigerants * 1)	* A1 (100V.AC) * A2 (200V.AC) * A3 (110V.AC)	C (Lead Wire type)	Flange * 2	10A	0.015	2.45	with		4.1	
	2006EX										* A4 (220V.AC) * A7 (24V.AC)	5.3
	2510EX	A (Air)	* AB (240V.AC) * D1 (100V.DC) * D6 (12V.DC)	9.1								
	3212EX	C (Inert gases)	* D7 (24V.DC) * D8 (48V.DC)	11.1								

* 1 R134a, R404A (For other refrigerants, please contact us.)

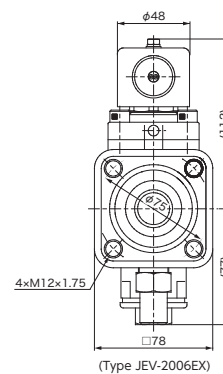
* 2 Joint flange can be attached as an option.

* 3 The weight is included a coil (AC lead wire type), the joint flange and a set of the tie bolt.

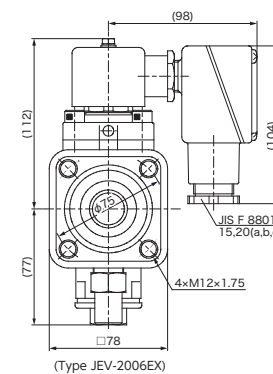
SPECIFICATIONS OF COILS

Rated Voltage	Frequency (Hz)	Tolerance (%)	Voltampere (VA)		Power consumption (W)	Insulation Class	Coil Style
			Running	Inrush			
24V.AC	50/60	+ 10 - 15	17/14	43/35	8/7	Class B Molded	Lead Wire type Drip-proof terminal box type
100V.AC							
110V.AC							
200V.AC							
220V.AC							
240V.AC							
12V.DC	—	± 10	—	—	10		
24V.DC							
48V.DC							
100V.DC							

- Current (A) = Voltampere / Rated Voltage
- IP Lead Wire type : IP67, Drip-proof terminal box type : IP34
- The standard specification of the coil style is the Lead Wire type.
- Drip-proof terminal box type can be used indoors where water drops may fall.



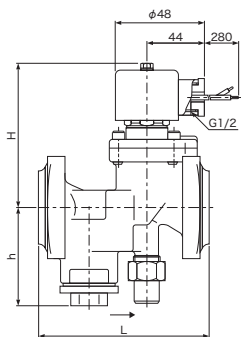
Type Lead Wire (IP67)



Drip-proof terminal box type (IP34)

Unit : mm

DIMENSIONS



Type JEV

Catalog No.		Unit : mm			
Type	Model	L	H *		h
			AC	DC	
JEV	1203EX	130	90	112	60
	2006EX		112	134	77
	2510EX	160	123	145	88
	3212EX	190	125	147	102

* "AC" refers assembled with AC power supply coil and "DC" refers assembled with DC power supply coil.

OPTIONAL PARTS

JOINT FLANGE

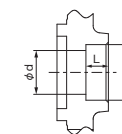
- The lower limit of operating temperature for flanges is -10°C. In case operating temperature would be below the lower limit, please contact us.
- When ordering the joint flange separately, please specify the "Joint Flange Catalog Number" from the compatibility table below.

OPTIONAL PARTS

Valve Body Catalog No.		Joint flange type							* 1 Joint flange Catalog No.					
Type	Model	Connection		Flange type (square flange)	Pipe type	Outer diameter of connection pipe [mm]	Flange inner diameter ϕ d [mm]	Insert hole						
		Style	Connection size					Screw thread		Inner diameter ϕ d0 [mm]	Depth L [mm]			
JEV	1203EX	10A	Socket brazing type type RBK	Copper pipe	05D	15.88	13.8	—	16.1	10	JEV-03E05D			
					06D	19.05	17.1		19.3		JEV-03E06D			
					07D	22.22	19.8		22.4		JEV-03E07D			
					03K	17.30	12.7		17.7		JEV-03E03K			
			04K	21.70	16.1	22.1	JEV-03E04K							
			2006EX	20A	Socket brazing type type RBK	Copper pipe	06D	19.05	17.1	—	19.4	12	JEV-06E06D	
							07D	22.22	19.8		22.4		JEV-06E07D	
							10D	25.40	22.6		25.6		JEV-06E10D	
	11D	28.58					25.8	28.8	JEV-06E11D					
	12D	31.75					28.6	32.0	JEV-06E12D					
	06K	27.20					21.4	27.6	JEV-06E06K					
	06S	Slip-on welding type type RSK			Steel pipe	27.20	27.6	—	27.6	—	JEV-06E06S			
	06G	Screwed type			Steel pipe	—	—	Rc 3/4	—	—	JEV-06E06G			
	2510EX	25A	Socket brazing type type RBK	Copper pipe	10D	25.40	22.6	—	25.6	14	JEV-10E10D			
					11D	28.58	25.8		28.8		JEV-10E11D			
					12D	31.75	28.6		32.0		JEV-10E12D			
					13D	34.92	31.4		35.2		JEV-10E13D			
					14D	38.10	34.5		38.1		JEV-10E14D			
					10K	Steel pipe	34.00		27.2		—	34.5	—	JEV-10E10K
			10S	Slip-on welding type type RSK	Steel pipe	34.00	34.5	—	34.5	—	JEV-10E10S			
			10G	Screwed type	Steel pipe	—	—	Rc 1	—	—	JEV-10E10G			
	3212EX	32A	Socket brazing type type RBK	Copper pipe	12D	31.75	28.6	—	32.0	16	JEV-12E12D			
					13D	34.92	31.4		35.2		JEV-12E13D			
					14D	38.10	34.5		38.3		JEV-12E14D			
					15D	41.28	37.3		41.5		JEV-12E15D			
					12K	Steel pipe	42.70		35.5		—	43.3	—	JEV-12E12K
					14K	Steel pipe	48.60		41.2		—	49.3	—	JEV-12E14K
			12S	Slip-on welding type type RSK	Steel pipe	42.70	43.3	—	43.4	—	JEV-12E12S			
14S			Steel pipe	48.60	49.3	—	49.3	—	JEV-12E14S					
12G			Screwed type	Steel pipe	—	—	Rc 1-1/4	—	—	JEV-12E12G				
Rc 1-1/2							—	—	JEV-12E14G					

* 1 The joint flange is a set of one joint flange on one side, bolts and flange packing * 2.
* 2 Only the flange packing can be purchased separately. Please specify the Flange packing Catalog No. from the table below.

Connection size of Joint flange	Flange packing Catalog No.
10A	JEV-1N-00001
20A	JEV-1N-00003
25A	JEV-1N-00004
32A	JEV-1N-00005



Example of Joint flange insert hole