

# SOLENOID VALVES FOR WATER

Type WEV

SAGInoMIYA

## GENERAL DESCRIPTION

- Pilot operated, 2-way, normally closed valve.
- For water in refrigeration, cooling, air conditioning systems, and general industrial plant.
- Valves for non-corrosive brine are available. To order, specify catalog No. with "B"  
Example: WEV-1504GLW for water  
WEV-1504GLB for non-corrosive brine, warm water
- Compact molded coil commonly fits all valve sizes.
- Operates in any position ... can be conveniently located in horizontal or vertical line with coil on top.



Type WEV-G



Type WEV-F

## TYPE NUMBER SELECTION (SPECIFICATIONS)

Unit: MPa {kgf/cm<sup>2</sup>}

Catalog No.			Port Size (mm)	Cv Value	Connection		O.P.D.		Max. Working Pressure	Wt. (kg)
Type	Model	Fluid			Steel Tube O.D.	Style	Min.	Max.		
WEV-	1504GL	W (Water)	15	4.3	1/2"	Rc	0.015 {0.15}	0.98 {10}	0.98 {10}	0.6
	2006GL		20	7.8	3/4"					0.8
	2510GL		25	10.4	1"					1.1
	3212GL		32	17.6	1-1/4"					1.6
	4014GL		40	26	1-1/2"					2.4
	5020GL		50	42	2"					3.6
	1504FL	B (glycol, Warm Water)	15	4.3	1/2"	*  Flange (Round Type)	0.015 {0.15}	0.98 {10}	0.98 {10}	2.0
	2006FL		20	7.8	3/4"					2.6
	2510FL		25	10.4	1"					3.7
	3212FL		32	17.6	1-1/4"					5.0
	4014FL		40	26	1-1/2"					5.7
	5020FL		50	42	2"					7.7
	6524FL		65	65	2-1/2"					12.8
	8030FL		80	100	3"					16.5

- \* Without companion flange (Weight without companion flange and bolts)
- O.P.D.: Operating Pressure Differential (by water pressure)
- Ambient temperature: -30 to 50°C, allowable fluid temperature: 0 to 60°C (Type W), -35 to 90°C (Type B)
- Apparent power: 16VA
- Use of a strainer 80 to 100 mesh at the valve inlet is recommended.
- Weight includes a coil
- Enclosure IP34 (WEV-W: Drip proof model)

## ELECTRICAL RATING OF SOLENOID COILS

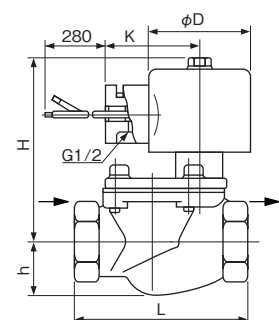
Rated Voltage	Tolerance (%)	Voltampere (VA)		Power Consumption (W)	Insulation Class
		Running	Inrush		
24V.AC, 100V.AC, 110V.AC 200V.AC, 220V.AC, 240V.AC	±10	18/14	57/47	9/8	* Class B Molded
12V.DC, 24V.DC 48V.DC, 100V.DC		-	-	11	

Specify voltage & frequency when order.

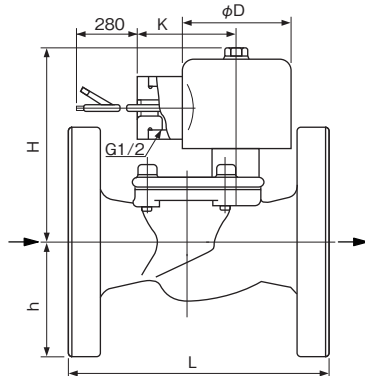
\* IEC compliance

## DIMENSIONS

Type WEV-G



Type WEV-F



Unit: mm

Catalog No.	Unit: mm				
	L	H	h	φD	K
1504GL	65	82	19	48	44
2006GL	80	86	25		
2510GL	90	91	29		
3212GL	105	97	36		
4014GL	120	103	47		
5020GL	140	126	55		
1504FL	105	82	48		
2006FL	115	86	50		
2510FL	125	91	63		
3212FL	140	97	68		
4014FL	150	103	70		
5020FL	160	126	78		
6524FL	200	138	88		
8030FL	240	152	93		