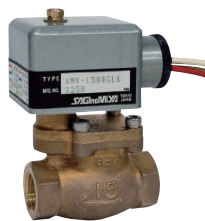


## SOLENOID VALVES FOR GENERAL PURPOSE / Type AMV



Type AMV-G

### FEATURE

- Available to use with water, steam, air or oil (50mm<sup>2</sup>/s or less).
- Apply H-class insulation molded coil for common use in AC100V and AC200V.
- It can also be installed on vertical piping.
- Normally Closed

### COMMON SPECIFICATION

- Max. working pressure : 0.98 MPa
- Fluid Temperature : -10~180°C ((No fluid freezing)
- Ambient temperature : -20~70°C (No fluid freezing)
- Normally Closed

### APPLICATIONS

- Heating and cooling equipment
- Sterilizers
- Humidifiers
- Oiling equipment, etc.

### DESCRIPTION OF CATALOG NO.

AMV - 15 04 G L K  
I II III IV V VI

I	Type
II	Port Size
III	Connection tube O.D.
IV	Connection type
V	Pressure class
VI	Fluid

### TYPE NUMBER SELECTION

Type	Catalog No.		Port Size (mm)	Cv Value	Connection		O.P.D. (MPa)		* Wt. (kg)
	Model	Fluid			Style	Connection size	Min.	Max.	
AMV	1504GL	K (water / steam / air / oil)	15	4.0	Rc	1/2"	0.03	0.98	0.8
	2006GL		20	6.5		3/4"			1.0
	2510GL		25	10.8		1"			1.5

• There is no identification of coil in the catalog number.  
\* Includes a coil.

### SPECIFICATIONS OF COILS

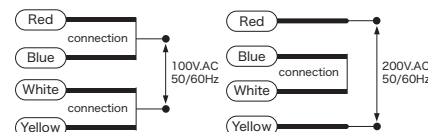
Rated Voltage	Frequency (Hz)	Tolerance (%)	Voltampere (VA)		Power consumption (W)	Insulation Class	Coil Style
			Running	Inrush			
100V.AC 200V.AC	50/60	+10 -15	15/12	32/28	8/7	Class H Molded	Lead Wire type

• Current (A) = Voltampere / Rated Voltage

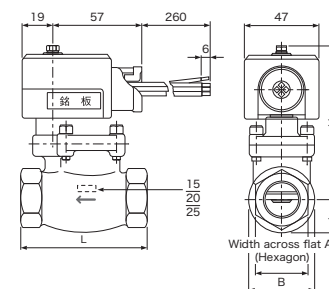


Lead Wire type

### WIRING METHOD

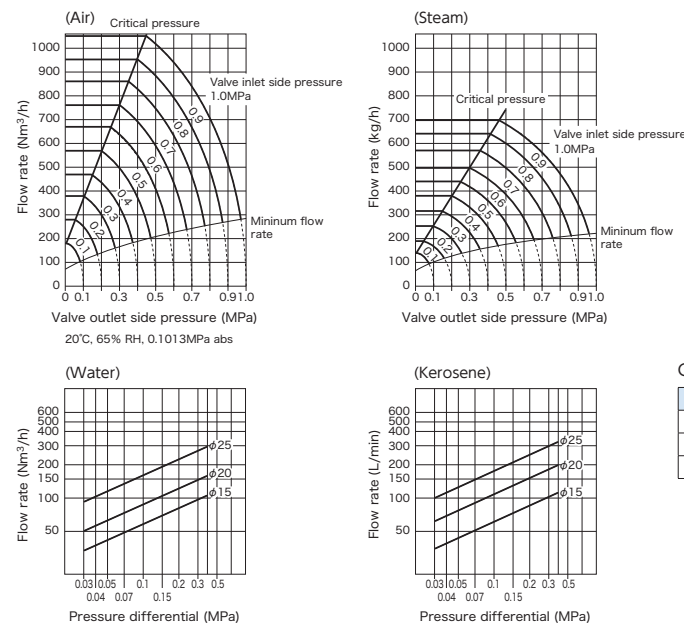


### DIMENSIONS



Catalog No.		Unit : mm				
Type	Model	L	H	h	A	B
AMV	1504GL	65	91.5	18.5	28	37
	2006GL	80	96	21	34	42
	2510GL	90	105.5	27	44	56

### FLOW CHARACTERISTICS



### Correction factor table

Port size	Factor
15	0.62
20	1.00
25	1.66

• The flow rate of Air or Steam should be multiplied by the correction factor.