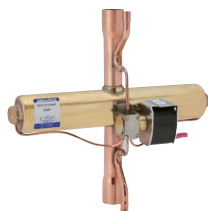


REVERSIBLE 2-WAY VALVE FOR REFRIGERANT / Type MHV



Type MHV

High Volume OEM Item

Drawings must be exchanged for purchase.
Please contact SAGINOMIYA for more details.

Coil sold separately

FEATURE

- 2-way valve with high flow rate and low pressure drop.

APPLICATIONS

- Packaged air conditioners
- VRF, etc.

COMMON SPECIFICATION

- Max. working pressure : 4.2 MPa
- Maximum Operating Pressure Differential : 3.1 MPa
- Minimum Operating Pressure Differential : 0.3 MPa
- Fluid Temperature (°C) : -20 ~ 120°C
- Ambient temperature (°C) : -20 ~ 55°C

DESCRIPTION OF CATALOG NO.

MHV - $\frac{L}{I} \frac{11}{II} \frac{04}{III} \frac{S}{IV} \frac{S}{V}$

I	Type
II	Normally Closed / Opened
III	Port Size
IV	Connection Size
V	Pilot tube

TYPE NUMBER SELECTION

Catalog No.		* 1 Refrigerant	Port Size (mm)	Style	Connection		Normal operation
Type	Model	Connection size					
				High-pressure side	Low-pressure side		
MHV	L1104S	R407C R410A	11.1	Copper tube solder (ODF)	1/2"	1/2"	Normally Opened
	H1104S						Normally Closed
	L1606BG	R448A R449A R407H	15.5		3/4"	3/4"	Normally Opened
	H1606BG						Normally Closed

Catalog No.		Pilot tube	Style	Connection size	* 2 Wt. (kg)	Remarks
Type	Model					
MHV	L1104S	Low-pressure side	Copper tube solder (ODF)	1/4"	0.35	Dedicated to high-pressure gas lines in refrigeration circuits
	H1104S					
	L1606BG	High / low-pressure both side			0.77	Dedicated to gas lines in refrigeration circuits
	H1606BG					

* 1 For other refrigerants, please contact us.
* 2 Valve only (without coil)

COIL SELECTION

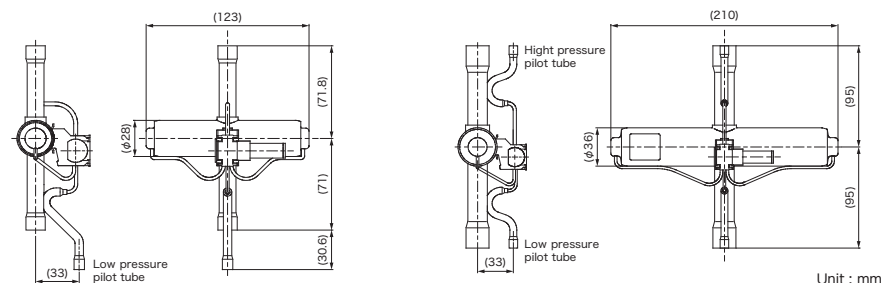
Catalog No.		Rated Voltage	Frequency (Hz)	Tolerance (%)	Voltampere (VA)		Power consumption (W)	Insulation Class	* 2 Wt. (kg)	
Type	Model				Running	Inrush				
STF	(G) □□□□	100V.AC	50/60	+ 10 - 15	13/10	39/30	7/6	Class B Molded * 1	0.13	
		200V.AC								
		110V.AC			± 10	11/9	33/27			6/6
		220V.AC								
		230V.AC								
240V.AC										

* 1 Compliant with IEC60085, 60335-2-40.

* 2 For lead wire length of 600mm.

- Use the STF-G type 4-way reversing valve coil.
- Coil is not included. Please specify coil voltage when ordering the valve body.
- Current (A) = Voltampere / Rated Voltage

DIMENSIONS



Type MHV-L1104, H1104

Type MHV-L1606, H1606

Unit : mm