

3-WAY VALVES / Type IEV



Type IEV-B1505



Type IEV-B3211

FEATURE

- For branch circuits
- Available for branching refrigerant circuits such as heat recovery systems and hot gas defrost systems.

APPLICATIONS

- Condensing units
- Refrigerator / Freezers, etc.

COMMON SPECIFICATION

- Max. working pressure : 2.94 MPa
- Ambient temperature : -20~50°C

DESCRIPTION OF CATALOG NO.

IEV - B 15 05 D X F * A 4 C
I II III IV V VI VII VIII IX X

I	Type
II	Operation
III	Port Size
IV	Connection tube O.D.
V	Connection type
VI	Pressure class
VII	Fluid
VIII	Coil power supply
IX	Coil voltage
X	Coil Style

TYPE NUMBER SELECTION

Catalog No.					Port Size (mm)	Cv Value	Connection	
Type	Model	* 1 Fluid	Rated Voltage	Coil Style			Style	Connection size
IEV	B1505DX	F (Fluorocarbon refrigerants)	* A1 (100V.AC) * A2 (200V.AC) * A3 (110V.AC) * A4 (220V.AC)	C (Lead Wire Type)	Copper tube solder (ODF)	18	6.3	5/8"
	B2007DX					20	9.0	7/8"
	B3211DX			C (Lead Wire Type)		30	25	1-1/8"
	B3212DX							1-1/4"
	B3213DX							W (Drip-proof terminal box type)

Catalog No.					* 2 O.P.D. (MPa)		Fluid Temperature (°C)	Operation	* 3 Wt. (kg)				
Type	Model	* 1 Fluid	Rated Voltage	Coil Style	Min.	Max.							
IEV	B1505DX	F (Fluorocarbon refrigerants)	* A1 (100V.AC) * A2 (200V.AC) * A3 (110V.AC) * A4 (220V.AC)	C (Lead Wire Type)	Copper tube solder (ODF)	0.29	2.06	-20~125	Branched	0.95			
	B2007DX									1.0			
	B3211DX			C (Lead Wire Type)						30	25	2.6	
	B3212DX											W (Drip-proof terminal box type)	2.6
	B3213DX												2.6

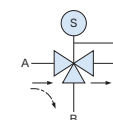
* 1 For available refrigerants, please contact us.

* 2 The difference between the compressor discharge side or evaporator outlet side (connection A) and the compressor suction side (connection D).

* 3 Includes a coil (Lead wire type).

For branch circuits

Flow	Power ON	Power OFF
	A → C	A → B



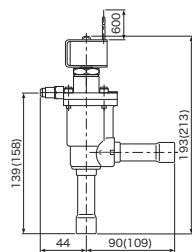
A : Compressor discharge line
B : Condenser inlet line
C : Sub-Condenser inlet line or Evaporator Inlet Line
D : Compressor suction line

SPECIFICATIONS OF COILS

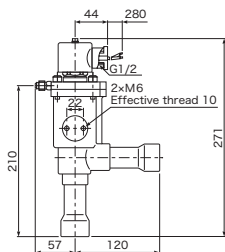
Valve body catalog No.		Rated Voltage	Frequency (Hz)	Tolerance (%)	Voltampere (VA)		Power consumption (W)	Insulation Class	Coil Style
Type	Model				Running	Inrush			
IEV	B1505DX B2007DX	100V.AC	50/60	± 10	11/9	33/27	6/5	Class B Molded	Lead Wire Type
		110V.AC							
		200V.AC							
	B3211DX B3212DX B3213DX	100V.AC			16/13	40/33	8/7		Drip-proof terminal box type
		110V.AC							
		200V.AC							

- IP Lead Wire type : IP67, Drip-proof terminal box type : IP34
- The standard specification of the coil style is the Lead wire type.
- Drip-proof terminal box type can be used indoors where water drops may fall.
- Current (A) = Voltampere / Rated Voltage

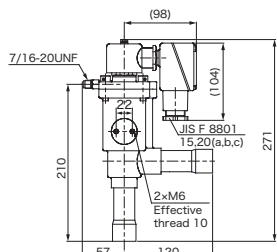
SPECIFICATIONS OF COILS



Type IEV-15D
(Type IEV-25D)



Type IEV-32



Unit : mm

Lead Wire Type

Drip-proof terminal box type

CAPACITY TABLE

Cooling capacity when used for discharge gas pipe

Condensing temperature : 38°C, Evaporating temperature : 5°C,
Gas temperature : 50°C.

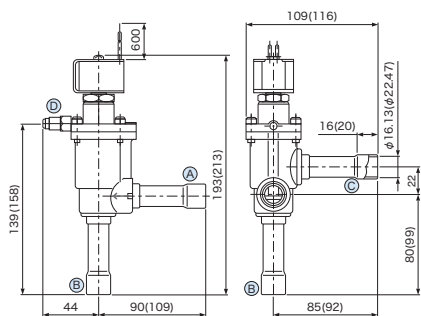
Port size (mm)	Capacity (kW)			
	R134a			
	Pressure difference between inlet and outlet of valve (MPa)			
	0.01	0.015	0.02	0.03
18	14	16	19	23
20	19	23	27	34
30	53	65	76	93

· In case the evaporating temperature is different, the value is multiplied by the correction factor in the evaporating temperature correction factor table.

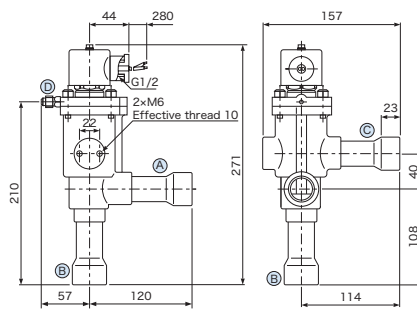
Evaporating temperature correction factor table

Evaporating temperature (°C)	Factor
5	1
0	0.99
-10	0.96
-20	0.93
-30	0.90
-40	0.87

DIMENSIONS



Type IEV-B1505DXF
(Type IEV-B2007DXF)



Type IEV-B3211 ~ 3213DXF

Unit : mm