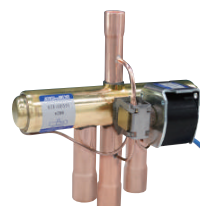


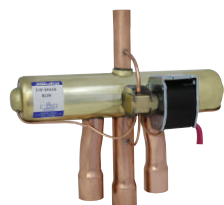
4-WAY REVERSING VALVES / Type STF



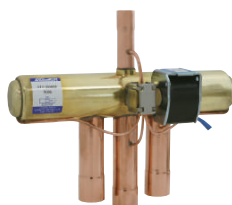
Type STF-H01



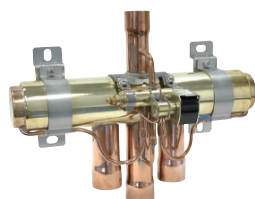
Type STF-H035




Type STF-H04



Type STF-H06



Type STF-30

Click or scan here for the capacity table. ⇒ 

URL : https://saginomiya.co.jp/en/auto/pdf/stf_capacity.pdf

High Volume OEM Item

Drawings must be exchanged for purchase. Please contact SAGINOMIYA for more details.

Coil sold separately

FEATURE

- Used for a switch of cooling ↔ heating , defrosting ↔ heating.
- Standards : UL/CSA, CE, UKCA, VDE (Please contact us for details such as approved specifications.)

COMMON SPECIFICATION

- Max. working pressure : 4.2MPa
- Fluid Temperature : -20 ~ 120°C *
- Ambient temperature : -20 ~ 55°C

* Products up to 130° C are also available. Please contact us for details.

APPLICATIONS

- Room air conditioners
- Packaged air conditioners
- VRF
- Heat pump water heaters
- Chillers, etc.

DESCRIPTION OF CATALOG NO.

STF-H - 01 67	I	Type
I II III	II	Capacity
	III	Serial number

STF - 20 27 G	I	II	III	I
---------------	---	----	-----	---

TYPE NUMBER SELECTION

Catalog No.	* 1		Port Size (mm)	Connection		O.P.D. (MPa)		* 2			
	Type	Model		Refrigerant	Style	High-pressure side	Low-pressure side		Min.	Max.	Wt. (kg)
STF		H0167	R407C R410A R448A R449A R407H	Copper tube solder (ODF)	Copper tube solder (ODF)	8	5/16"	3/8"	0.3	3.1	0.20
		H0267				11.1	3/8"	1/2"			0.32
		H0321				11.5	1/2"	5/8"			0.36
		H0351				14					0.39
		H0429				16					0.69
		H0651				18.1	3/4"	7/8"			0.74
		H0731				20					1.21
		H0951				21.3	7/8"	1-1/8"			1.24
		H0954									1.55
		2027G				24	1"	1-1/4"			1.51
		2522G				28					3.6
		3019G				34	1-1/4"	1-1/2"			4.4
		4013G				40					8.4
		5020G				50	1-1/2"	2-1/8"			8.5
		6009G				60					Copper tube solder (High-pressure side : ODM) (Low-pressure side : ODF)

* 1 For other refrigerants, please contact us.

* 2 Valve only (without coil)

COIL SELECTION

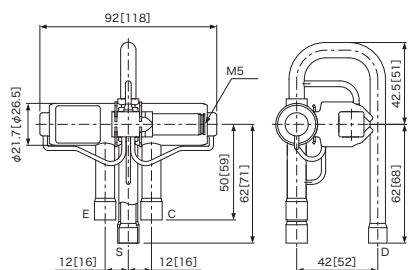
Valve body catalog No.		Rated Voltage	Frequency (Hz)	Tolerance (%)	Voltampere (VA)		Power consumption (W)	Insulation Class	* 2
Type	Model				Running	Inrush			
STF	H□□□□	100V.AC	50/60	± 10 - 15	10/8	30/24	6/5	Class B Molded * 1	0.13
		110V.AC							
		220V.AC							
		230V.AC			11/9	33/27			
		240V.AC							
		100V.AC							
	200V.AC								
	110V.AC								
	(G)□□□□	220V.AC		11/9	33/27	6/6			
		230V.AC							
		240V.AC							

* 1 Compliant with IEC60085, 60335-2-40.

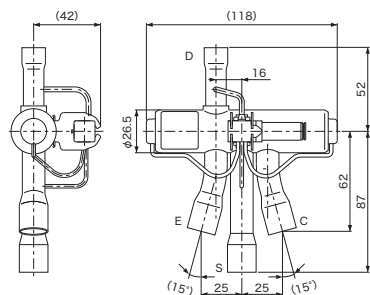
* 2 For lead wire length of 600mm.

• Coil is not included. Please specify coil voltage when ordering the valve body.

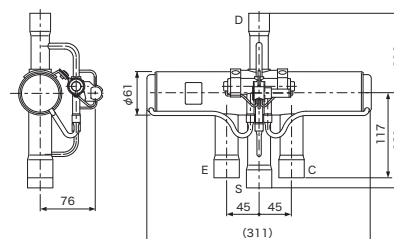
DIMENSIONS



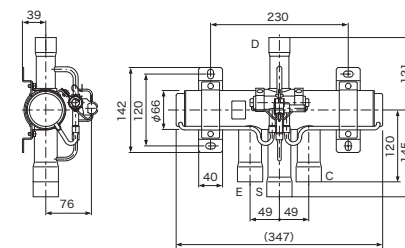
Type STF-H01
[Type STF-H02]



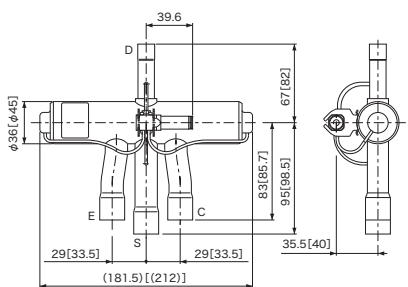
Type STF-H03



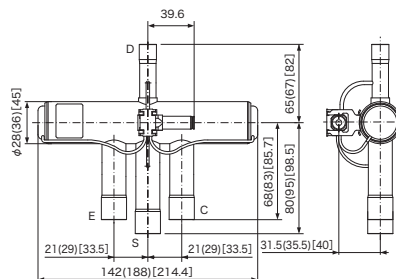
Type STF-25G



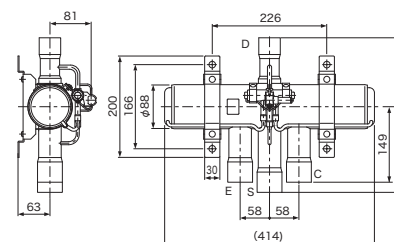
Type STF-30G



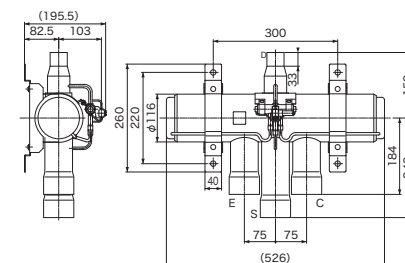
Type STF-H04
[Type STF-H07]



Type STF-H035
(Type STF-H06)
[Type STF-H09]

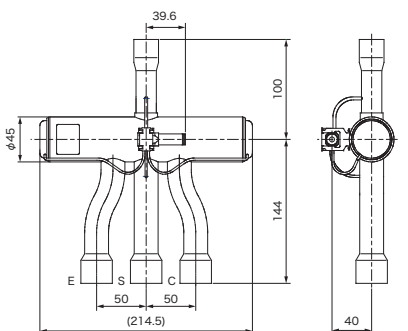


Type STF-40G
[Type STF-50G]

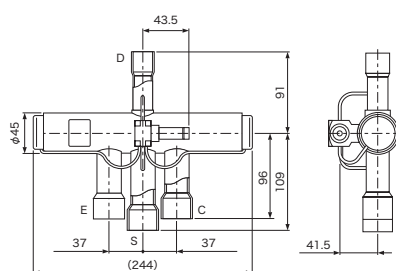


Type STF-60G

Unit : mm



Type STF-H09



Type STF-20G

Flow direction (flow path)

Flow	Power ON		Power OFF	
	D → E	C → S	D → C	E → S