

4-WAY REVERSING VALVES

High Volume OEM Item (Type STF)

Type **STF**

SAGInoMIYA

GENERAL DESCRIPTION

- Pilot operated 4-way reversing valves are suitable for heat pump applications on unitary, split system and window type air conditioners, etc.
- 4-way pilot valve adoption has an advantage on reliable changeover operations.
- Designed to lower the minimum operating pressure difference between high and low side. Pressure drop and valve leakage are minimized.

CE mark applicable (available upon request)

UL listed (available upon request)

SPECIFICATIONS

- Max. working pressure: 4.2MPa {42.8kgf/cm²}
(Type STF-H****)
4.15MPa {42.3kgf/cm²}
(Type STF-****G)
- Ambient temperature: - 20 to 55°C
- Allowable fluid temperature: - 20 to 120°C
(STF-H0104 to STF-1511G)
- 20 to 130°C
(STF-2023G to 6001G)
- Ambient humidity: Less than 95% R.H.



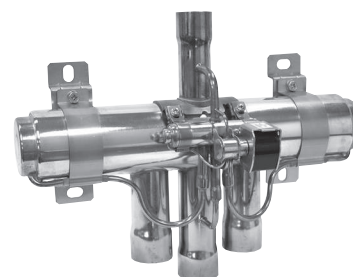
Type STF-H01, H02



Type STF-H04, H07



Type STF-H06, H09



Type STF-25, 30, 40, 50, 60

TYPE NUMBER SELECTION

Catalog No.	Port Size (mm)	Capacity (R410A)		O.P.D. (MPa) {kgf/cm ² }		Connection (O.D.)		Wt. (kg)
		(kW)	(U.S.R.T.)	Max.	Min.	Discharge	Suction & Coils	
STF-H0104	8	1.8 to 6.4	0.51 to 1.82	3.1 {31.6}	0.3 {3.1}	5/16"	3/8"	0.2
STF-H0202	11.1	2.0 to 11.4	0.57 to 3.24			3/8"	1/2"	0.32
STF-H0301	11.5	5.3 to 14.6	1.50 to 4.15			1/2"	5/8"	0.37
STF-H0404	16	8.3 to 33	2.36 to 9.39				3/4"	0.77
STF-H0601	18.1	8.4 to 45	2.39 to 12.8			3/4"	7/8"	0.87
STF-H0712	20	21 to 53	5.97 to 15.0			7/8"	1-1/8"	1.2
STF-H0901	21.3	21 to 68.5	5.97 to 19.5			7/8"	1-1/8"	1.23
STF-1511G	23	39 to 59	11.1 to 16.7			1"	1-1/4"	1.55
STF-2023G	24	39 to 74	11.1 to 21.0			1"	1-1/4"	3.4
STF-2501G	28	52 to 94	14.8 to 26.7			1-1/4"	1-1/2"	4.7
STF-3001G	34	65 to 124	18.5 to 35.2			1-1/2"	1-3/4"	9.1
STF-4001G	40	115 to 188	32.7 to 53.4				2-1/8"	9.4
STF-5001G	50	145 to 235	41.2 to 66.8				I.D. 1-5/8"	2-5/8"
STF-6001G	60	230 to 360	65.4 to 102					

• O.P.D.: Operating Pressure Differential (with air)

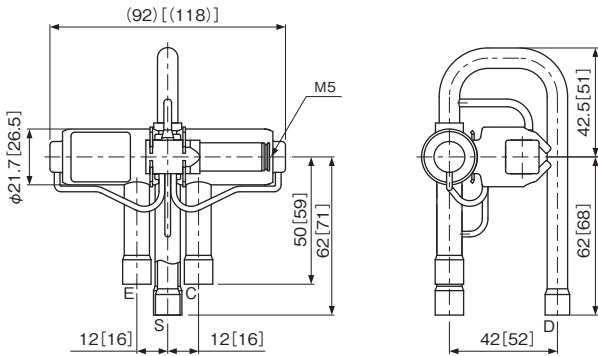
ELECTRICAL RATING OF SOLENOID COILS

Catalog No.	Rated Voltage		Tolerance (%)	Voltampere(VA)		Power Consumption (W)	Insulation Class
				Running	Inrush		
STF-H * * * *	100V. AC	50/60Hz	+10 -15	10/8	30/24	6/5	* Class B Molded
	200V. AC						
	110V. AC 220V. AC						
STF- * * * * G	100V. AC	50/60Hz	+10 -15	13/10	39/30	7/6	
	200V. AC						
	110V. AC 220V. AC						
	230V. AC		+10 -10	11/9	33/27	6/6	
	240V. AC		+10 -10				

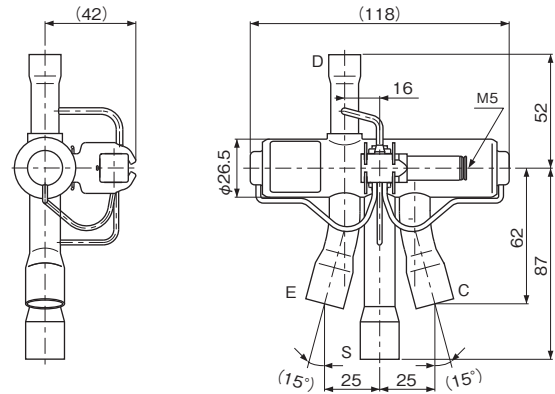
* IEC compliance

DIMENSIONS

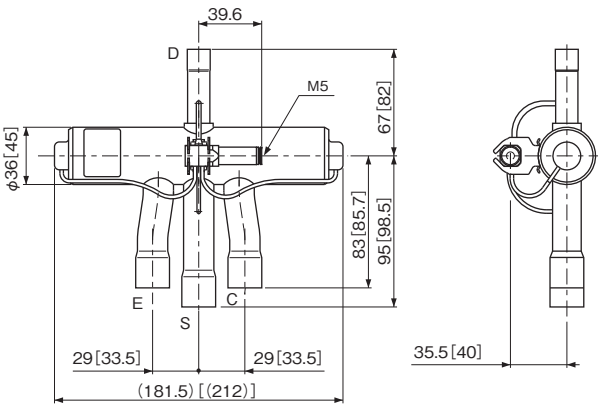
Type STF-H0104 [H0202]



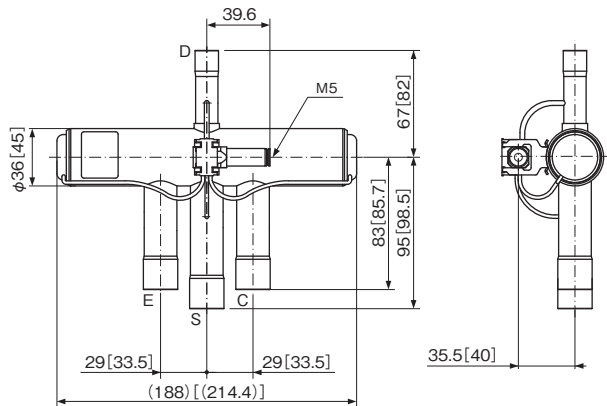
Type STF-H0301



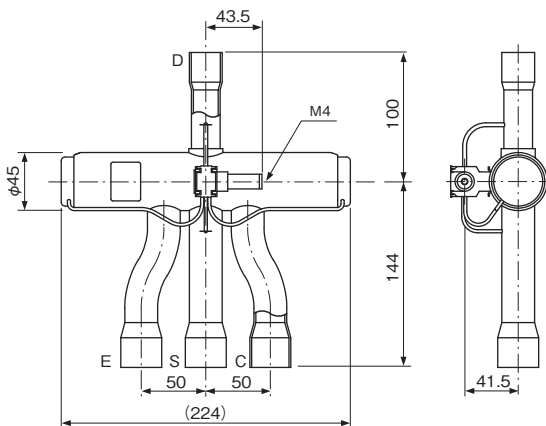
Type STF-H0404 [H0712]



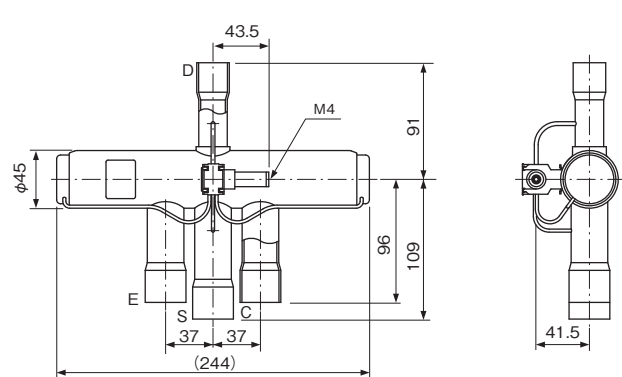
Type STF-H0601 [H0901]



Type STF-1511G

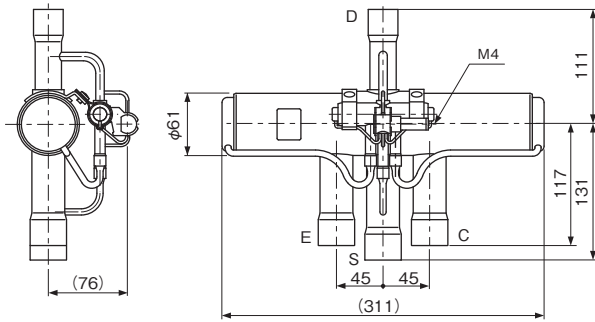


Type STF-2023G

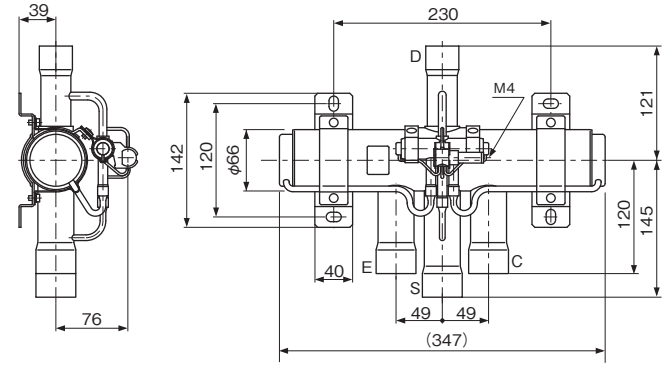


Unit: mm

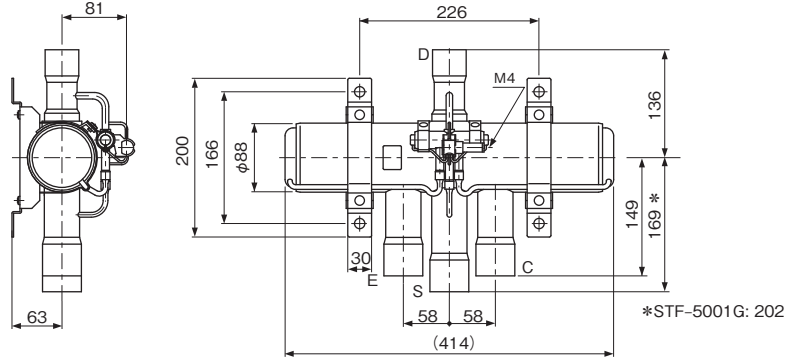
Type STF-2501G



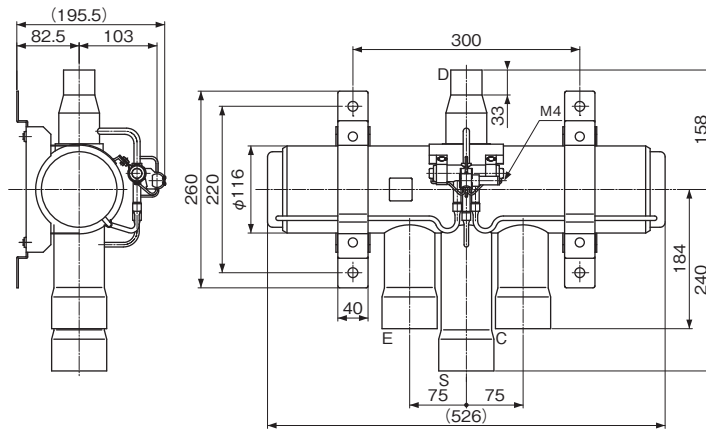
Type STF-3001G



Type STF-4001G, -5001G

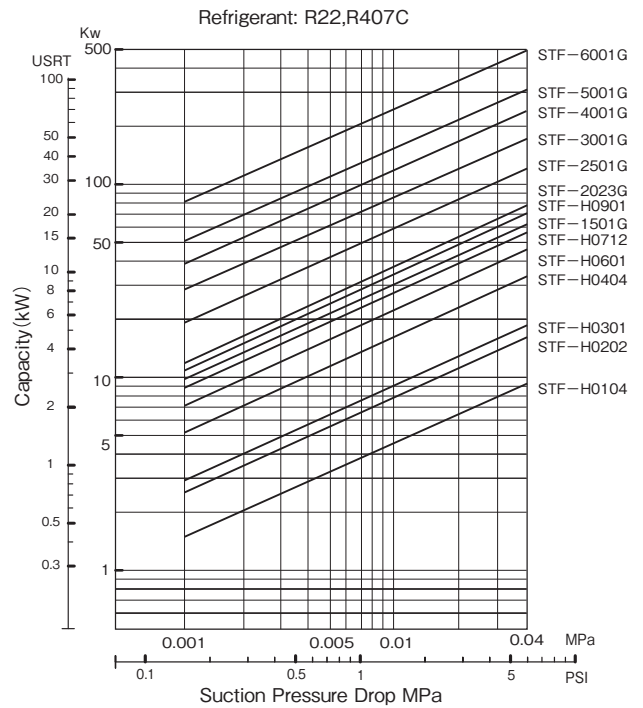
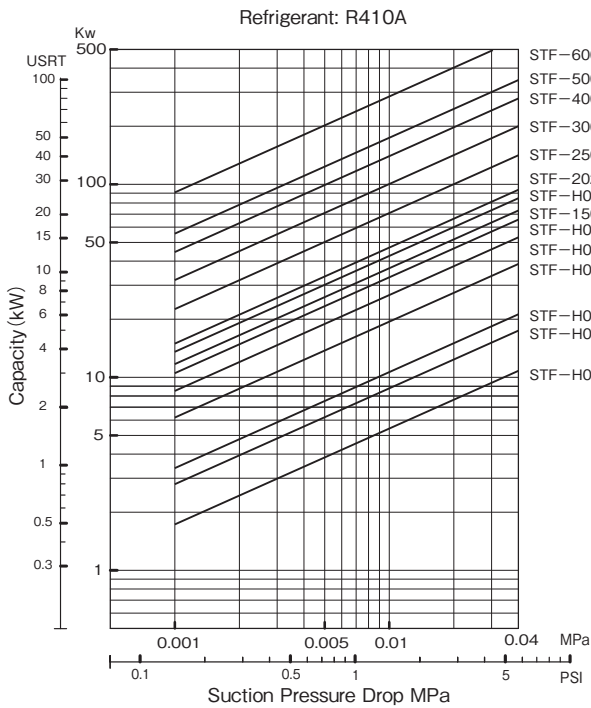


Type STF-6001G



Unit: mm

FLOW RATE (Capacity)



* Flow Rate Conditions Condensing temp.: 38°C
Evaporator temp.: 5°C
Superheat temp.: 5°C