

TEMPERATURE CONTROLS

REMOTE / DIRECT SENSING

Type LWS, FWS, RWS & EWS

SAGInoMIYA

GENERAL DESCRIPTION

- Most suitable model can be selected from the variations of wide temperature range with either adjustable or fixed differential. Narrow differential is further advantageous.
- Sensing elements are air sensed and liquid sensed type depending on control media. Also, sensing element can be selected from remote or direct type depending on application.
- Single pole double throw contacts allows use for either heating or cooling application, with large contact rating as well.
- Adjusting mechanism is driver adjusting type as standard on delivery, but a knob assembly and a concealed plate are also supplied as standard accessories.

UL listed (available upon request)



Type LWS



Type EWS

TYPE NUMBER SELECTION (SPECIFICATIONS)

Type LWS – Set high type with standard remote sensing element

Unit: °C

Catalog No.						Temp. Adjusting Range		Differential		Bulb Size (mm)	Ambient Temp.	Limit of Bulb Temp.	Wt. (kg)
Type	Contact	Model	Differential	Rating	Capillary Length	Min.	Max.	Min.	Max.				
LWS-	C1	030	A (Variable)	G	Standard L1 (L = 1m) Option L2 (L = 2m) L3 (L = 3m) L5 (L = 5m)	-35	30	2	7	φ 9.5 × 100	-20 to 70	60	0.45
		060				-5	60					90	
		090				25	90					120	
		120				40	120					150	
		160				95	160					185	
		200				135	200					230	
		240				175	240					265	
		030	F (Fixed)		R	Standard L1 (L = 1m) Option L2 (L = 2m) L3 (L = 3m) L5 (L = 5m)	-35	30	2 (Fixed)	φ 9.5 × 100		60	
		060					-5	60				90	
		090					25	90				120	
		120					40	120				150	
		160					95	160				185	
		200					135	200				230	
		240					175	240				265	

Type FWS – Air Sensed type with standard remote sensing element

Unit: °C

Catalog No.						Temp. Adjusting Range		Differential		Bulb Size (mm)	Ambient Temp.	Limit of Bulb Temp.	Wt. (kg)	
Type	Contact	Model	Differential	Rating	Capillary Length	Min.	Max.	Min.	Max.					
FWS-	C1	030	A (Variable)	G	Standard L1 (L = 1m)	-35	30	2	7	Max. φ 37 × 58	-20 to 70	60	0.52	
		060				-5	60					90		
		090				25	90					120		
		120				40	120					150		
		160				95	160					185		
		200	135		200	230								
		240	175		240	265								
		030	F (Fixed)		R	Option L2 (L = 2m) L3 (L = 3m) L5 (L = 5m)	-35	30	2 (Fixed)			φ 37 × 58		60
		060					-5	60						90
		090					25	90						120
120	40	120		150										
160	95	160		185										

Type RWS – with coiled capillary sensing element

Unit: °C

Type	Catalog No. Designation				Temp. Adjusting Range		Differential		Sensing Element (mm)	Ambient Temp.	Limit of Tube Temp.	Wt. (kg)	
	Contact	Model	Differential	Rating	Min.	Max.	Min.	Max.					
RWS-	C1	060	A (Variable)	G	-5	60	2	7	Coiled Tube Max. $\phi 42 \times 40$	-20 to 60	60	0.43	
		034			-10	35	1.4	5		-20 to 70	70		
		054			10	55				-20 to 70	70		
		060	F (Fixed)		R	-5	60	2 (Fixed)		-20 to 70	70		
		034				-10	35	1.4(Fixed)		-20 to 70	70		
		054				10	55	-20 to 60		60			

Type EWS – with direct immersion sensing element

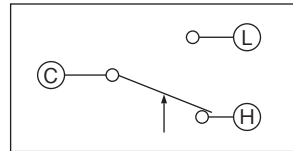
Unit: °C

Type	Catalog No. Designation				Temp. Adjusting Range		Differential		Sensing Element (mm)	Ambient Temp.	Limit of Tube Temp.	Wt. (kg)	
	Contact	Model	Differential	Rating	Min.	Max.	Min.	Max.					
EWS-	C1	080	A (Variable)	G	0	80	2.5	8	$\phi 10.8 \times 70$	-20 to 70	110	0.51	
		120			40	120					150		
		160			95	160					185		
		080	F (Fixed)		R	0	80	2.5 (Fixed)			110		
		120				40	120	150					
		160				95	160	185					

ELECTRICAL RATINGS

Electrical Rating Code	Rated Voltage (V)		Power Factor (cos ϕ)	125V. AC	250V. AC
	Rated Current (A)				
G	Non-Inductive Current		1.0	0.5 to 16	0.5 to 8
	Inductive Current	Full Load	0.75		
		Inrush Current	-	-	96
R	Non-Inductive Current		1.0	0.05 to 8.5	0.05 to 4.5
	Inductive Current	Full Load	0.75		
		Inrush Current	-	-	51

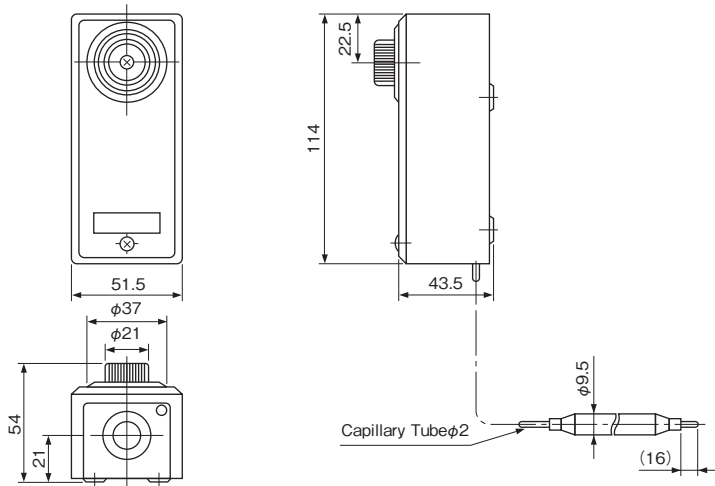
CONTACT STYLE



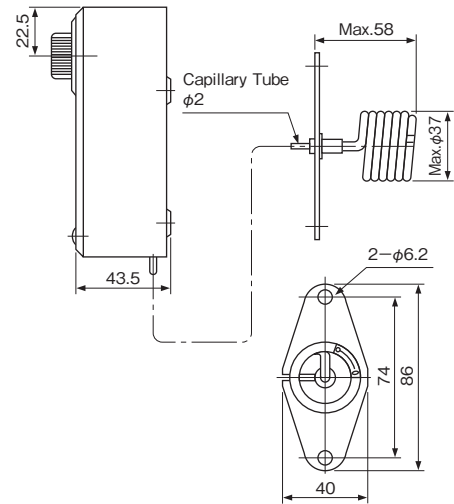
Models "set high"
 The dial indicates the high switch point (C - L close, C - H open).
 The low switch point (C - L open, C - H close) is obtained by deducting the differential from the high switch point.
 Arrow mark indicates a direction of switch action on temperature increase.

DIMENSIONS

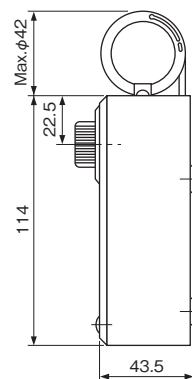
Type LWS



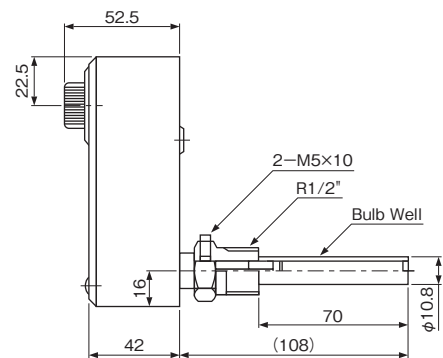
Type FWS



Type RWS



Type EWS



Unit: mm

ACCESSORY : Available upon request. (Refer to page 47.)